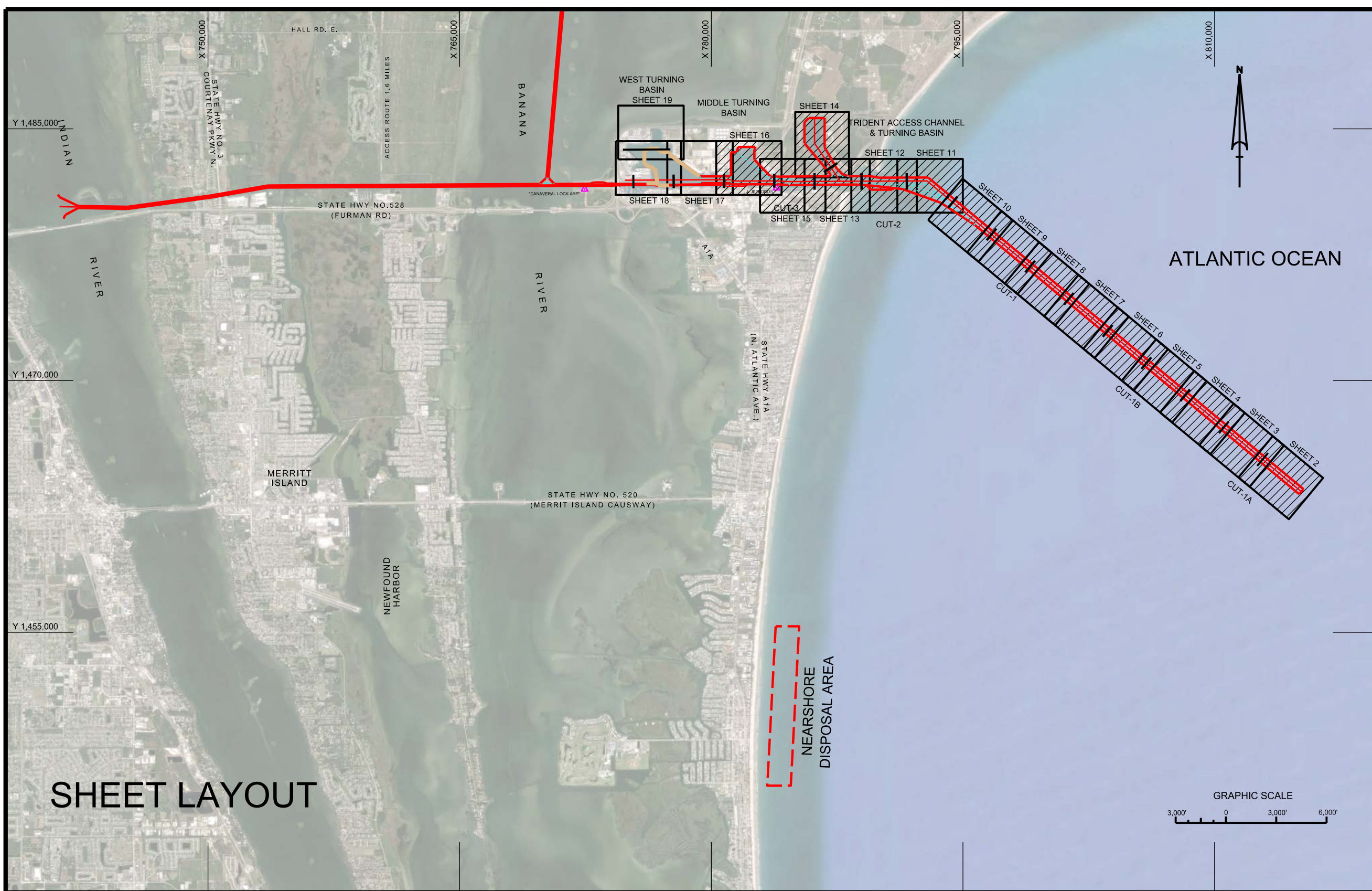
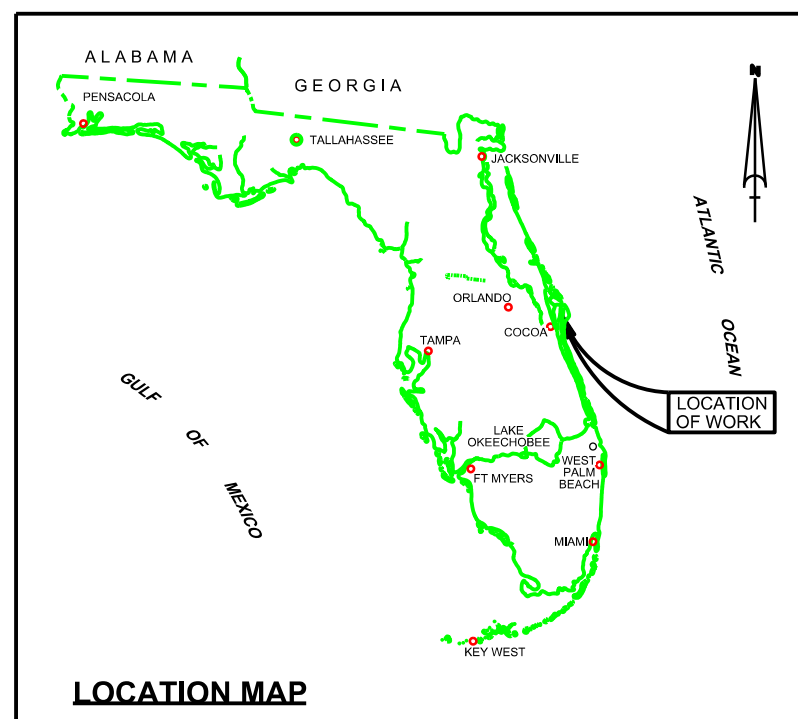


CANAVERAL HARBOR BREVARD COUNTY, FLORIDA 2Q NAVY HYDRO EXAM SURVEY FY21



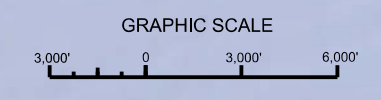
SURVEY NOTES

- REFER TO SURVEY NO. 21-101.
- TIDAL REDUCTIONS WERE OBTAINED UTILIZING A REAL-TIME KINEMATIC (RTK) GPS AND REFERENCED TO MLLW UTILIZING A HYPACK KINEMATIC TIDE DATUM (KTD) MODEL. KTD FILE NAME IS: "CANAVERAL.HBR-2015 02 20.KTD".
- ALL ELEVATIONS ARE BELOW THE CHART DATUM UNLESS PRECEDED BY A (+) SIGN.
- PLANE COORDINATES ARE BASED ON THE TRANSVERSE MERCATOR PROJECTION FOR THE EAST ZONE OF FLORIDA AND REFERENCED TO THE CURRENT REALIZATION OF THE NORTH AMERICAN DATUM OF 1983 (NAD83), BASED ON THE NOAA NATIONAL SPATIAL REFERENCE SYSTEM (NSRS).
- ALL STATIONING REFERS TO THE CENTERLINE OF THE CHANNEL.
- THIS SURVEY WAS PERFORMED USING REAL-TIME KINEMATIC (RTK) GPS POSITIONING WITH THE FOLLOWING REFERENCE BASE LOCATION:
*REFERENCE BASE LOCATED AT "CANAVERAL LOCK ARP" (PID: BBCV67)
*TIDE STAFF LOCATED FROM "JEFFORDS" (PID: BBCQ55)
- DEPTHS DEPICTED BY THIS SURVEY ARE REFERENCED TO MLLW. TIDAL EPOCH 1983-2001 AS REPORTED BY THE NATIONAL OCEANIC AND ATMOSPHERIC ADMINISTRATION (NOAA). A MODIFIED VERSION OF NOAA'S VDATUM MODEL WAS USED TO CALIBRATE TO THE PUBLISHED MLLW HEIGHTS OF THE BENCHMARKS BELOW:
NOAA TIDAL STATION 872-1604, TRIDENT PIER, CANAVERAL, FL (PID: BBCQ55)
- VERTICAL MEASUREMENTS WERE MADE USING A R2 SONIC MODEL 2024 MULT-BEAM AND A ROSS SMARTSOUNDER DUAL-FREQUENCY 28/200 KHZ SINGLE-BEAM TRANSDUCER OPERATING AT 28/200 KHZ. HIGH FREQUENCY SOUNDINGS ARE SHOWN FOR CUT-1A. LOW FREQUENCY SOUNDINGS SHOWN FOR CUTS 1, 1B, 2, 3, MTB, TRIDENT ACCESS CHANNEL, TRIDENT TURNING BASIN AND THE POSEIDON WHARF.

VESSEL	DATE OF SURVEY	CUT
SB-48	23 MAR 2021	CUT-2 & 3, MTB, POSEIDON WHARF, NORTH CARGO PIER
SB-44	25 MAR 2021	CUT-2, TRIDENT ACCESS CHANNEL
SV SALZER	09 MAY 2021	CUTS 1 & 2
SV SALZER	10 MAY 2021	CUTS 1A & 1B

- AIDS TO NAVIGATION WERE LOCATED DURING THIS SURVEY.
- THE INFORMATION DEPICTED ON THIS MAP REPRESENTS THE RESULTS OF SURVEYS MADE ON THE DATES INDICATED ABOVE AND CAN ONLY BE CONSIDERED AS INDICATING THE GENERAL CONDITIONS AT THAT TIME. THIS CHART IS SOLELY FOR THE DISTRIBUTION OF AVAILABLE DEPTHS AT THE TIME OF THE SURVEY.
- SURVEY ACCURACY PERFORMANCE STANDARDS, QUALITY CONTROL, AND QUALITY ASSURANCE REQUIREMENTS WERE FOLLOWED DURING THIS SURVEY IN ACCORDANCE WITH USACE EM 1110-2-1003, HYDROGRAPHIC SURVEYING, 30 NOV 2013.

LEGEND	
	MONUMENT
	LIGHTED BEACON
	GREEN DAY BEACON
	RED DAY BEACON
	RED LIGHTED BUOY
	GREEN LIGHTED BUOY
	CAN BUOY
	NUN BUOY
	TIDE STAFF
	PROJECT DEPTH



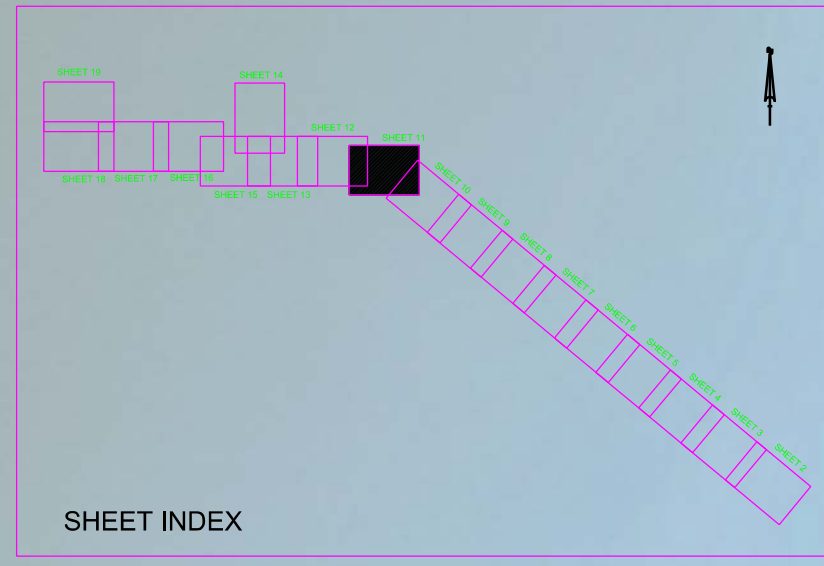
US Army Corps of Engineers
Jacksonville District
SAFETY ON THIS JOB
DEPENDS ON YOU

DEPARTMENT OF THE ARMY
JACKSONVILLE DISTRICT, CORPS OF ENGINEERS
JACKSONVILLE, FLORIDA

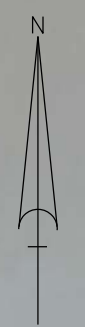
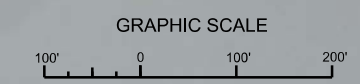
2Q NAVY HYDRO EXAM SURVEY FY21
35, 39, 41, 43, 44 AND 46-FOOT PROJECT
INDEX, LOCATION AND VICINITY
PLAN


Scale: AS SHOWN
Drawing no.
1 / 16
SHEET 1 OF 19

MAP LABEL	AIDS TO NAVIGATION	PLANE COORDINATES		LATITUDE	LONGITUDE
		X	Y		
R*10"	LT. BUOY-10 (05/21)	792,940	1,482,147	28°24'37.67"	80°34'28.29"
G*11"	LT. BUOY-11 (05/21)	793,613	1,480,648	28°24'22.50"	80°34'20.80"



- NOTES:
1. REFER TO SURVEY NO. 21-101.
 2. SEE SHEET NO.1 FOR SURVEY NOTES.
 3. LAT/LONG GRID TICS ARE AT 10-SECOND INTERVALS.





US Army Corps of Engineers
Jacksonville District

SAFETY ON THIS JOB
DEPENDS ON YOU

DEPARTMENT OF THE ARMY
JACKSONVILLE DISTRICT, CORPS OF ENGINEERS
JACKSONVILLE, FLORIDA

21-101-GS-BRDLDGN
CANAVERAL HARBOR-CNGMCCF_VTB.DGN
21-101-A-SOUL_C1_L.F.DGN
21-101-A-SOUL_C2_L.F.DGN
21-101-A-NAV.DGN

Designed by: WRM
Drawn by: WRM
File No.: 21-101-NAV.DGN
Date: MAY 2021

21-101-GS-BRDLDGN
CANAVERAL HARBOR
BREVARD COUNTY, FLORIDA

2Q NAVY HYDRO EXAM SURVEY FY21
35, 39, 41, 43, 44 AND 46-FOOT PROJECT
STA. 105+00 CUT - 1 THRU STA. 137+00 CUT - 2
PLAN

Scale: AS SHOWN

Drawing no.

11 / 16

SHEET 11 OF 19

CAPE CANAVERAL
AIR STATION-
NAVAL ORDNANCE
TEST UNIT
(NOTU)

STA. 12+81.68 T.A.C.
RGE. 1256.74

STA. 182+23.71 CUT-2
RGE. -100

STA. 190+00

STA. 195+00

STA. 182+23.71

STA. 185+00

STA. 180+00

STA. 175+00

STA. 170+00

STA. 167+12.70 CUT-2

STA. 165+00

STA. 165+00

STA. 165+00

STA. 165+00

STA. 165+00

STA. 165+00

STA. 165+00

STA. 165+00

STA. 165+00

STA. 165+00

STA. 165+00

STA. 165+00

STA. 165+00

STA. 165+00

STA. 165+00

STA. 165+00

STA. 165+00

STA. 165+00

STA. 165+00

STA. 165+00

STA. 165+00

STA. 165+00

STA. 165+00

STA. 165+00

STA. 165+00

STA. 165+00

STA. 165+00

STA. 165+00

STA. 165+00

STA. 165+00

STA. 165+00

STA. 165+00

STA. 165+00

STA. 165+00

STA. 165+00

STA. 165+00

STA. 165+00

STA. 165+00

STA. 165+00

STA. 165+00

STA. 165+00

STA. 165+00

STA. 165+00

STA. 165+00

STA. 165+00

STA. 165+00

STA. 165+00

STA. 165+00

STA. 165+00

STA. 165+00

STA. 165+00

STA. 165+00

STA. 165+00

STA. 165+00

STA. 165+00

STA. 165+00

STA. 165+00

STA. 165+00

STA. 165+00

STA. 165+00

STA. 165+00

STA. 165+00

STA. 165+00

STA. 165+00

STA. 165+00

STA. 165+00

STA. 165+00

STA. 165+00

STA. 165+00

STA. 165+00

STA. 165+00

STA. 165+00

STA. 165+00

STA. 165+00

STA. 165+00

STA. 165+00

STA. 165+00

STA. 165+00

STA. 165+00

STA. 165+00

STA. 165+00

STA. 165+00

STA. 165+00

STA. 165+00

STA. 165+00

STA. 165+00

STA. 165+00

STA. 165+00

STA. 165+00

STA. 165+00

STA. 165+00

STA. 165+00

STA. 165+00

STA. 165+00

STA. 165+00

STA. 165+00

STA. 165+00

STA. 165+00

STA. 165+00

STA. 12+44.38 T.A.C.
RGE. 743.26

STA. 7+53.58 T.A.C.
RGE. 659.79

STA. 171+80.94 CUT-2
RGE. -105.53

STA. 5+00 T.A.C. RGE. 1000

STA. 175+00

STA. 170+00

STA. 170+00

STA. 170+00

STA. 170+00

STA. 182+23.71 CUT-2
RGE. -100

STA. 190+00

STA. 195+00

STA. 182+23.71

STA. 185+00

STA. 180+00

STA. 185+00

STA. 180+00

STA. 180+00

STA. 182+23.71 CUT-2
RGE. -100

STA. 190+00

STA. 195+00

STA. 182+23.71

STA. 185+00

STA. 180+00

STA. 185+00

STA. 180+00

STA. 180+00

STA. 182+23.71 CUT-2
RGE. -100

STA. 190+00

STA. 195+00

STA. 182+23.71

STA. 185+00

STA. 180+00

STA. 185+00

STA. 180+00

STA. 180+00

STA. 182+23.71 CUT-2
RGE. -100

STA. 190+00

STA. 195+00

STA. 182+23.71

STA. 185+00

STA. 180+00

STA. 185+00

STA. 180+00

STA. 180+00

STA. 182+23.71 CUT-2
RGE. -100

STA. 190+00

STA. 195+00

STA. 182+23.71

STA. 185+00

STA. 180+00

STA. 185+00

STA. 180+00

STA. 180+00

STA. 182+23.71 CUT-2
RGE. -100

STA. 190+00

STA. 195+00

STA. 182+23.71

STA. 185+00

STA. 180+00

STA. 185+00

STA. 180+00

STA. 180+00

STA. 182+23.71 CUT-2
RGE. -100

STA. 190+00

STA. 195+00

STA. 182+23.71

STA. 185+00

STA. 180+00

STA. 185+00

STA. 180+00

STA. 180+00

STA. 182+23.71 CUT-2
RGE. -100

STA. 190+00

STA. 195+00

STA. 182+23.71

STA. 185+00

STA. 180+00

STA. 185+00

STA. 180+00

STA. 180+00

STA. 182+23.71 CUT-2
RGE. -100

STA. 190+00

STA. 195+00

STA. 182+23.71

STA. 185+00

STA. 180+00

STA. 185+00

STA. 180+00

STA. 180+00

STA. 182+23.71 CUT-2
RGE. -100

STA. 190+00

STA. 195+00

STA. 182+23.71

STA. 185+00

STA. 180+00

STA. 185+00

STA. 180+00

STA. 180+00

RGE -100

RGE 200

RGE 400

RGE -100

RGE -100

RGE -100

RGE -100

RGE 200

RGE 400

RGE -100

RGE -100

RGE -100

RGE -100

RGE 200

RGE 400

RGE -100

RGE -100

RGE -100

RGE -100

RGE 200

RGE 400

RGE -100

RGE -100

RGE -100

RGE -100

RGE 200

RGE 400

RGE -100

RGE -100

RGE -100

RGE -100

RGE 200

RGE 400

RGE -100

RGE -100

RGE -100

RGE -100

RGE 200

RGE 400

RGE -100

RGE -100

RGE -100

RGE -100

RGE 200

RGE 400

RGE -100

RGE -100

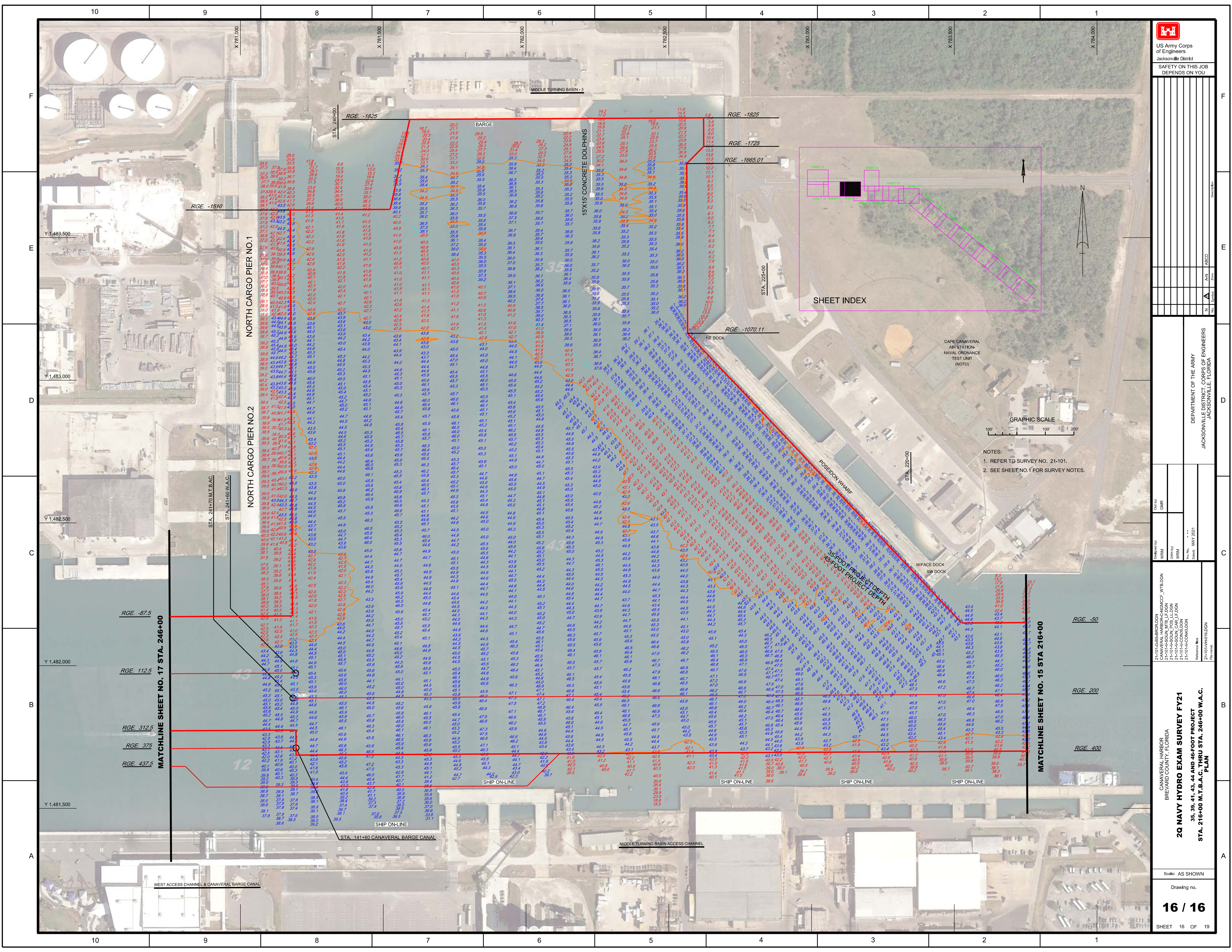
RGE -100

RGE -100

RGE 200

RGE 400

RGE -100



North arrow pointing up and a graphic scale bar showing 0, 100, and 200 feet.

- NOTES:
1. REFER TO SURVEY NO. 21-101.
2. SEE SHEET NO. 1 FOR SURVEY NOTES.

DEPARTMENT OF THE ARMY
JACKSONVILLE DISTRICT, CORPS OF ENGINEERS
JACKSONVILLE, FLORIDA

Project information table with columns for Design No., Date, and other details.

Personnel table with columns for Name, Title, and Date.

2Q NAVY HYDRO EXAM SURVEY FY21
35, 39, 41, 43, 44 AND 46-FOOT PROJECT
STA. 216+00 M.T.B.A.C. THRU STA. 246+00 W.A.C.
PLAN